

# Derelict crab pots



4 days Mar 2010

2 watermen

Location	Crab pots	Eel pots	Buoyed	Un-buoyed
North Coastal Bays	54	14	53	17
South Coastal Bays	56	2	50	5

location	Live Crabs	Dead Crabs	Other Fauna
Northern Bays	2	0	4 oyster toad
Southern Bays	26	1	2 oyster toad

# Skimmer Island enhancement project spring 2011



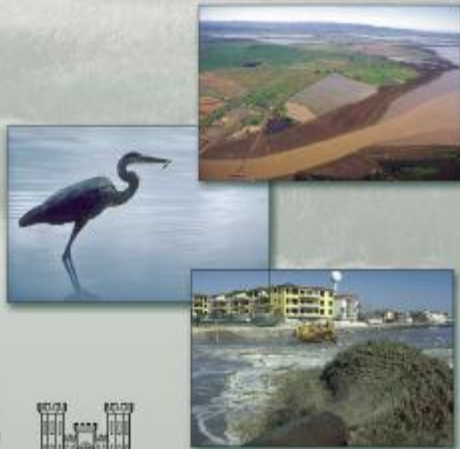
# Skimmer Island enhancement project spring 2011

## Sediment Strategy Meeting, Sept 2010

- Dedicated “commission”, composed of local, State, Fed, and private members, to address dredging and sediment management in the bays.
- The commission would oversee, match and traffic sediments between
  - 1) projects that generate sediments, such as navigation dredging projects; and
  - 2) projects that require sediments such as various restoration projects (e.g. Skimmer Island or Ocean Pine wetland restorations).
- Permitting should be streamlined and ‘one-stop’.

## Identifying, Planning, and Financing Beneficial Use Projects Using Dredged Material

### Beneficial Use Planning Manual



U.S. Environmental Protection Agency, Washington, DC  
U.S. Army Corps of Engineers, Washington, DC

### **The Coastal Program's Role...**

The Coastal Program was a catalyst in establishing the coastal bays as an EPA National Estuary. While the Coastal Bays Program was being developed, the Coastal Program supported and housed Coastal Bays Program staff and facilitated the development of the Management Plan. The Coastal Program continues to play a significant role in the direction and implementation of the Coastal Bays Program. The Coastal Program has been working to:

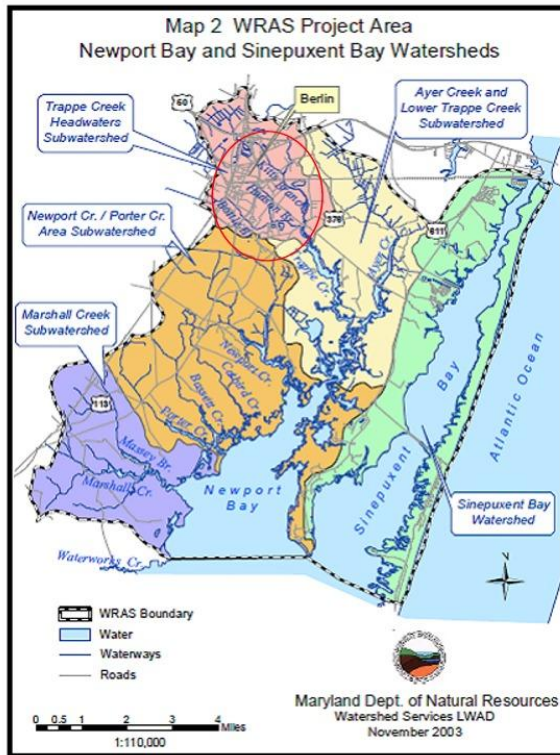
- **Improve navigation and dredging in the coastal bays by leading an advisory group to study navigation and dredging issues in the coastal bays.**

# Hudson Branch

36,000 lbs of trash removed

Stream restoration

Underserved community



# Other Clean ups

